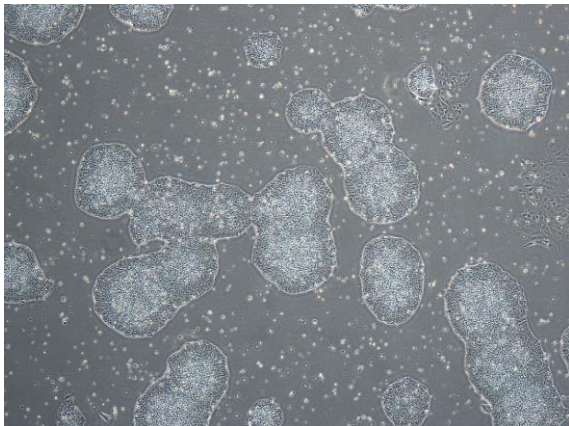
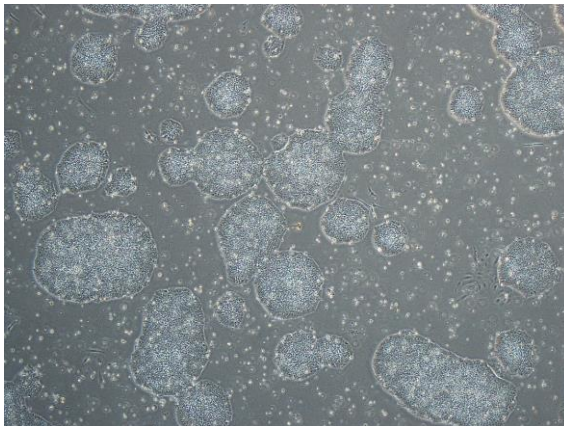


## 【 CiRA-j-1076 】 Morphology of iPSC colonies

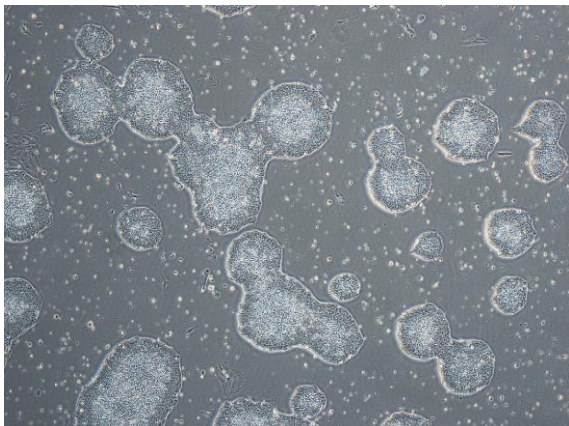
CiRA-j-1076-A: passage-2



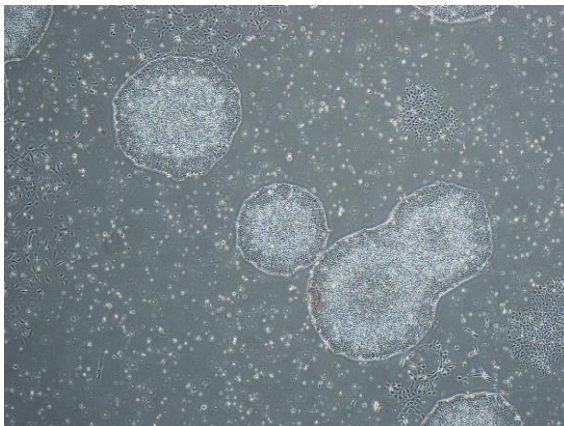
CiRA-j-1076-B: passage-2



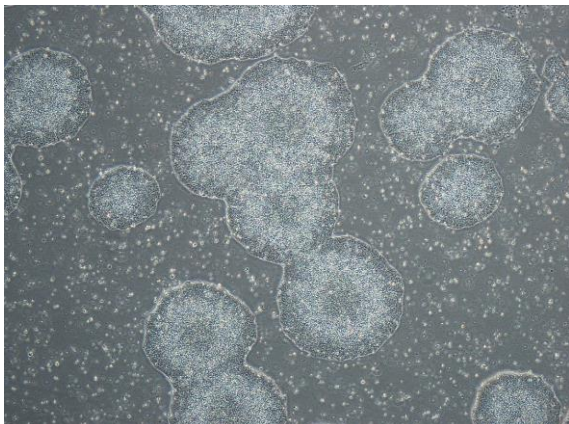
CiRA-j-1076-C: passage-2



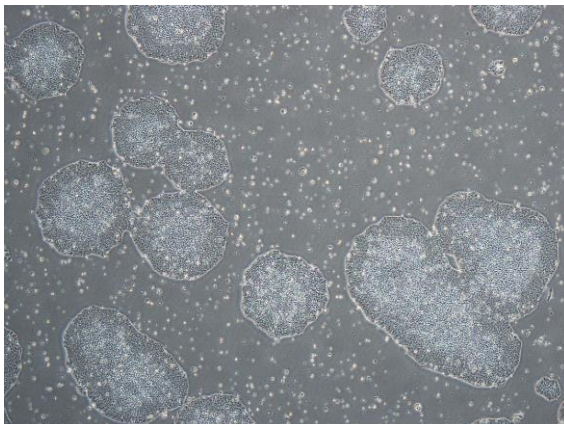
CiRA-j-1076-D: passage-2



CiRA-j-1076-E: passage-2



CiRA-j-1076-F: passage-2



( All images were captured at 4x magnification )